



Linen
Biennale
N.Ireland



Image: Mairead McCormack

Recall

Rethink

Reform

A Celebration of Linen
Past. Present. Future.
August | September | October 2018



linenbiennialnorthernireland.com

Image: Katie Lamour Design



Northern Ireland's Linen Biennale celebrates the past, present and future landscape of linen through an extended heritage and arts festival, presented and hosted by multiple venues across the region. It is taking place in August, September and October 2018.

Every two years R-Space Gallery, Lisburn, leads on this three-month festival of heritage, arts, craft and design, including exhibitions and installations, conference, master-classes, and performances under the key themes of Recall, Rethink and Reform. In this programme you will see the full breadth of activities for you, your family and friends to enjoy.

The Linen Biennale stimulates new thinking about Ireland's oldest textile flax / linen. Reaching out to the last of a generation who worked in the heyday of Ulster's linen production, the Linen Biennale forms a bridge to connect our internationally renowned linen heritage with contemporary uses. This programme highlights the very best in cutting-edge developments from around the world.

We wish to extend our thanks to the funders for their vision and financial support to make this vibrant programme possible and to the many artists, makers, organisations, and venues who brought the Linen Biennale to life. While every effort has been made to correctly list all of the many events and activities we would urge you to double check with the venue before you travel.



Robert Martin and Anthea McWilliams

Co-Curatorial Directors, R-Space Gallery and founders of the Linen Biennale.

Robert and Anthea established R-Space Gallery CIC in 2011. The Gallery's opening exhibition was The Art and Science of Linen with Anna Dumitriu, which planted the first seed of what would blossom into the Linen Biennale. Anthea has been a freelance arts and culture professional since 1988, including her contemporary dance practice and work within R-Space. Robert heads up the Gallery's creative programming, which is primarily funded by Arts Council Northern Ireland and produces a blend of exhibitions and community events across the year.



Professor Jane McCann, M Des RCA, M.Phil, C Text FTI.

Clothing and Textiles Professional

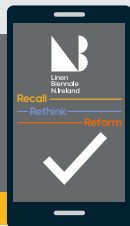
Based in Northern Ireland, McCann is involved in the user-driven design research and development of technical and smart functional apparel as well as creating and curating new clothing and product applications for linen / flax fibres. She continues to have international academic involvement in performance sportswear design, provides expertise to textile-oriented projects, presents at events and contributes to publications. A recent interest is in the application of flax fibres in composite materials.



Jo Watson

Project Management, JW Associates NI

Jo secures funding, stakeholder management and production aspects of the project. She is responsible for the continuing development, production and delivery of events, exhibitions and workshops throughout the Linen Biennale. www.jwassociates.org



SIGN UP FOR OUR NEWSLETTER TO BE THE FIRST TO KNOW ABOUT NEW EVENTS AND ACTIVITIES



linenbiennale@gmail.com



[LinenAliveNI](https://www.facebook.com/LinenAliveNI)



[@LinenAliveNI](https://twitter.com/LinenAliveNI)



[linenaliveni](https://www.instagram.com/linenaliveni)



Recall

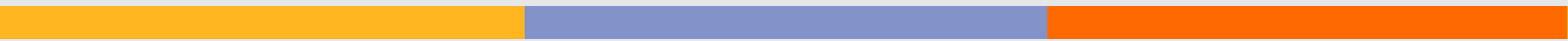
To celebrate linen/flax fibre heritage through design that emphasises the longevity, durability and timeless quality of linen. We look to our rich Linen history and heritage and how it relates to our lives today.

Rethink

To increase awareness, of the importance of textiles within our everyday lives and of the particular attributes of linen/flax fibre for a range of artefacts and design-led product innovations.

Reform

To communicate the value of textiles, through the recognition of linen/flax fibre as a relatively sustainable material. And to emphasise the ethos of a 'slower' more responsible approach to the development of value-added product to include new flax fibre applications such as composite materials.





Linen
Biennale
N.Ireland



**Funding raised by
The National Lottery**
and awarded by the Heritage Lottery Fund



LOTTERY FUNDED



It is with thanks to these funders that we have been able to produce the Linen Biennale 2018. Our special thanks goes to Arts Council Northern Ireland and the British Council Northern Ireland who had the vision to fund the feasibility study in 2015 which led the way for the biennale. We would like to acknowledge and thank the Heritage Lottery Fund and Lisburn & Castlereagh City Council for their financial support of our programmed activities.

Linen Biennale Conference 3rd - 4th October 2018

This is a two day conference to be held in Lisburn, Northern Ireland on 3rd and 4th October 2018 during the Northern Ireland Linen Biennale.

The Biennale Conference aims to expand new thinking associated with Ireland's oldest textile. The conference reaches out to stimulate collaboration between industry, trade bodies and academia with a focus on the fields of technology, design and research that will inform the creative industries and the wider economy.

Through engagement with local and international practitioners and audiences, the overall conference programme aims to foster fresh approaches to an ancient and truly European fibre, that represents an

environmentally friendly material, with an authentic local story.

The conference provides opportunities for industry, academia, research professionals and students to share their recent research on the key themes: Recall, Rethink and Reform.

Speakers include:

Dilip Tambyrajah - Secretary General at International Natural Fibre Organisation,

Patricia Belford -Textile designer and Senior Research Fellow at the University of Ulster

Debera Johnson - Academic Director of Sustainability, Pratt Institute.

Christien Miendertsma
Dutch artist and Designer

Tim Parry-Williams - Course leader MA Design Fashion and Textiles, Bath Spa University

Sylvie De Coster - Conservator and Curator Texture Flax Museum Coutraï/Kortrijk

Malgorzata Zimniewska - Institute of Natural Fibres and Medicinal Plants, Ponzan

Adrien Landry - Montreal Centre for Contemporary Textiles

Mary Mullin - Lucienne & Robin Day Foundation & Chair of SMBA

Conference tickets:

Two day conference pass with one conference dinner on the 3rd October 2018	£175
Student and concessions inc conference dinner - proof required at registration	£100
Day 1 including conference dinner 3rd October	£120
Day 2 Conference and Linen Futures Fashion Show 4th October	£ 75

Book via the website linenbiennalenorthernireland.com

Using the discount code of EARLYBIRDLB18 will reduce the ticket price by 10%. This is available until 31st July 2018.

Trish Belford - Senior Research Fellow,
Belfast School of Art, Ulster University

Gill Gledhill - Lucienne & Robin Day
Foundation & Chair of SMBA

Elles van Vegchel - Head of Museum
Affairs at the Textiel Museum

Mario Sierra - Creative Director,
Mourne Textiles

Lisa Bloomer - M Des RCA,
Textile artist and lecturer

Stijn Roodnat - Creative Director,
Label/Breed

Brian Anderson - Assistant Professor
of Industrial Design, University of Illinois

Gareth Davies - Composites Evolution
(UK)

Tara St. James - Research Fellow,
Pratt Institute

Kevin Hendrickx - Expert of the
European Scientific Committee at
CELC



Linen Futures: Fashion Showcase

4th October | 7pm | PRONI | Evening of Day 2 Conference

Recall



Image: David Cleland





Image courtesy of McBurney and Black

The activities throughout the Linen Biennale **Recall** theme have been made possible by our funders help, especially from the Heritage Lottery Fund and Lisburn & Castlereagh City Council.



PRONI tours with practical demonstrations of heritage crafts

Practitioners displaying heritage skills with 6 interactive workshops following a guided tour of PRONI linen archives.

PRONI

2 Titanic Boulevard, Titanic Quarter, Belfast BT3 9HQ

t: 028 9053 4800

FREE | Please book via

Linenbiennialenorthernireland.com

Adult

14 years – 17 years must be accompanied by an adult

PRONI linen archives will be interpreted and explained with a tour inviting participants to read, handle and engage with the linen artefacts. Each tour will have a practitioner who can bring these heritage skills to life.

Singing Walking Tour in Lisburn City Centre

FREE | Please book via
Linenbiennialnorthernireland.com

Adult

14 years – 17 years must be accompanied by an adult

During the singing tour the public will be able to see first-hand how the local heritage comes to life on the streets and in the buildings. It will be eye catching and unexpected, creating an enjoyable tour.

Lisburn City Walking & Talking Tour

FREE | Please book via
Linenbiennialnorthernireland.com


Adult

14 years – 17 years must be accompanied by an adult

Led by Alan Clarke, an accredited heritage tour guide. From the story of linen merchant Henry Munro being hung in Market Square to the Irish Linen Centre and Lisburn Museum, Alan Clarke will encourage participants to embrace with the local legacy and share it with others.

The tour will finish at R-Space gallery where participants can draw their own conclusions on a linen handkerchief to take away as a souvenir.

Image courtesy of McBurney and Black



European Heritage Open Day Events

R-Space Gallery

8th September 2018 | 11:00am - 1:00pm

32 Castle St, Lisburn BT27 4XE

t: 028 9266 3179

FREE | Please book via
Linenbiennialnorthernireland.com

Adult

14 years – 17 years must be accompanied by an adult

The theme for 2018 is The Art of Sharing which presents an opportunity to share our linen heritage stories through our buildings and their connections to location and people. Please check our website for information on the costumed singing performance and lecture which will happen throughout the historic building.

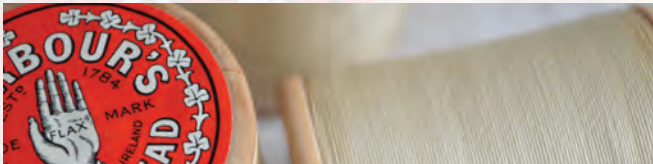


Image courtesy of McBurney and Black

Belfast Linen Quarter Walking Tour

Belfast City Centre

FREE | Please book via
Linenbiennialnorthernireland.com

Adult

14 years – 17 years must be accompanied by an adult

Led by Alan Clarke, accredited heritage tour guide supported by Linen Biennale volunteers

This walking tour is an enjoyable way to learn about one of Belfast's most historic districts and the former heart of the city's linen industry. The Linen Quarter boasts some of the city's most significant historical buildings and its many fine former mercantile warehouses offering a glimpse into Belfast's glorious past when it once dominated the global linen industry.

This year the Linen Biennale is working in partnership with Belfast Central Business District. Check our website Linenbiennialnorthernireland.com for exciting news about showcasing the best in Linen Heritage crafts, makers, products and Linen history in Bedford Street during August and September 2018.

Linen Bus Tours - by Fiona McKelvie

FREE | Please book via

Linenbiennialenorthernireland.com

Adult

14 years – 17 years must be accompanied by an adult

Fiona McKelvie – www.mcburneyandblack.com

These bus tours will take place in the Linen Triangle including Banbridge, Dromore, Dungiven and Rostrevor. Visitors & participants can travel with Fiona McKelvie, a renowned linen expert who will be on hand to engage on linen heritage, answer questions and enhance the experience of the processes used in each location.



Image: McBurney and Black

Air Your Linen

FREE | Please book via

Linenbiennialenorthernireland.com

Adult

14 years – 17 years must be accompanied by an adult

During August, September, and October, we will be hosting a number of sessions in venues across Northern where the public are encouraged to bring along their family linen and have it appraised and dated where possible.

There will be an opportunity to donate linen tablecloths to the Linen Biennale and with permission any donated large linen tablecloths will be stitched together to form the largest tablecloth in Northern Ireland. These tablecloths will be exhibited on bleaching greens throughout the Linen Biennale 2018, 2020, 2022 with a view to eventually staging the largest tea party in Northern Ireland in 2022.

Information on dates and venues to bring your linen to will be found on the Linen Biennale website

www.linenbiennialenorthernireland.com



www.fergusonirishlinen.com

Thomas Ferguson Irish Linen Factory Tour

11.30am Tuesdays and 2.30pm Thursdays by appointment



Our Linen Centre in Banbridge tells the story of linen in the company through interpretative material. It also offers retail facilities where our products can be purchased.

Linen Centre Opening Hours (no appointment is necessary)

Monday	9am - 4.30pm
Tuesday	9am - 4.30pm
Wednesday	9am - 4.30pm
Thursday	9am - 4.30pm
Friday	9am - 12.15pm

t: 028 4062 3491

w fergusonirishlinen.com

Tour Costs:

£7.50 - 2 - 10 persons

£5.00 - 10+ persons

*To arrange a tour please give us at least 3 days' notice and we will do our best to accommodate you. The tour takes around 45 minutes, and all tours are taken by an experienced guide. (Not suitable for children under 7)

This image has been reproduced with kind permission of the Deputy Keeper of the Records, PRONI.

The Linen Planes

The Ulster Aviation Society is a diverse group of enthusiasts, working on a voluntary basis to further public education in the history of aviation.

Their heritage collection currently includes 35 aircraft, ranging from vintage WWII fighters through Cold War-era fast jets, shorts designed & built aircraft, civilian aircraft, plus military helicopters, engines, artefacts and rare aviation reference materials, all with strong links to aviation within the island of Ireland.

The Linen Biennale will be arranging 3 guided tours throughout the duration of the Biennale. For more information visit linenbiennalenorthernireland.com

**Ulster Aviation Society,
Gate 3 – Maze Long Kesh,
94-b Halftown Road, Maze, LISBURN, Co. Antrim,
BT27 5RF**

✉ info@ulsteraviationsociety.org



Irish Linen Centre and Lisburn Museum

Discover the History of Lisburn and Irish Linen.

The Museum aims to collect, safeguard and interpret artefacts and information relating to the Irish linen industry and the history of Lisburn and the Lagan Valley.

Explore Ireland's industrial heritage in the Museum's award-winning exhibition 'Flax to Fabric: the Story of Irish Linen'. Trace the history of linen production in Ulster, from the earliest times to the present, and see live spinning and weaving demonstrations.

The museum is open Monday to Saturday, 9.30 -17.00 throughout the year.

t: 028 9266 3377

✉ ilc.reception@lisburncastlereagh.gov.uk

W LisburnMuseum.com

f [IrishLinenCentreAndLisburnMuseum](https://www.facebook.com/IrishLinenCentreAndLisburnMuseum)

t [Lisburn_Museum](https://twitter.com/Lisburn_Museum)

Monaghan County Museum Online Exhibition and In House Museum Display

Monday - Friday 11:00am - 5:00pm | Saturday 12:00pm - 5:00pm

Closed Sunday and Bank Holidays

The Monaghan Story of Linen - A display in the museum of flax and linen artefacts including tools and a sample of flax used in the linen making process and finished products.

An online exhibition of artefacts portraying the importance of the linen trade in County Monaghan and the linen making process. This exhibition will also include the story of the involvement of the Leslie family of Glaslough with the linen heritage of the county. Images will have information on the flax making process and how it was integral to the development of the county as we know it today.

The artefacts featured will include some of the following; a drag used for pulling drowned linen from a flax hole, linen stamp impressions, railway flags as used in local Great Northern Railway stations, a linen firescreen and an embroidered sampler, a Belbroid nightgown, items from a linen wedding trousseau & linen business documents.

 [monaghanmuseum](#)
 [monaghan.ie/museum](#)



The Linen Opera

R-Space is delighted to commission this their first opera for the first Linen Biennale 2018*

A new chamber opera celebrating the beauty and bounty of flax together with the mythologies that surround it, a special tale will be woven captivating all who gather round the Spindle.

As their starting point, Composer Seán Doherty and Librettist Peter Morgan Barnes are taking Giambattista Basile's 17th century story of Sleeping Beauty to tell a post apocalyptic tale about what happens to Talia's world during the hundred years she is asleep. Flax has been proscribed by the government and the state's security services make every effort to prevent her being pricked by a shard of the stalk. They fail...a row develops... all is asleep, all becomes derelict, ...scavengers move in and the sleeping bodies become objects for the waking survivors. Many uncomfortable moments.

“ Our bodies are our own.”

Involving NI Opera singers and community performers and supported by Arts Council Northern Ireland & Lisburn City Castlereagh Council.

*This is a preliminary work for a much larger production to be staged in 2020.

For information on performances, please see Linen Biennale website.

linenbiennialnorthernireland.com



McConvilles Flax Mill

Tours booked during August - October
Dromore, Lisburn


McConvilles Flax Mill and museum is a working scutch mill, located 1 mile from Dromore, Co. Down.

Tours are booked in advance, come to enjoy a nostalgic trip down memory lane and see the water powered mill during your visit.

6 Caughey's Road Dromore BT25 1DS

t: 028 9269 2512

m:07935 330 798

 Felicitymcconville@hotmail.co.uk

 [facebook.com/pages/McConvilles-Flax-Mill](https://www.facebook.com/pages/McConvilles-Flax-Mill)


Wellbrook Beetling Mill Cookstown

The last working water-powered linen beetling mill in Northern Ireland is a unique experience for all the family. Try some scutching, hackling and weaving and over the thundering cacophony of beetling engines, learn about the importance of the linen industry in 19th century Ireland. This is a National Trust Property.

For opening times and events throughout the year please visit website.

Price: Gift Aid Admission Adult: £5.50 Child: free
20 Wellbrook Road, Corkhill, Cookstown,
Co Tyrone BT80 9RY

t: 028 8674 8210

 wellbrook@nationaltrust.org.uk

 nationaltrust.org.uk/wellbrookbeetling-mill

Image: McBurney and Black

Exhibition 300 Years of Making

William Clark and Sons

Upperlands

73 Kilrea Rd, Upperlands Maghera BT46 5RZ

Visit Ireland's oldest linen village and Flax Centre.

An insight into the workings of Ireland's oldest remaining linen mill, 300 Years in the Making shows how textile processing knowledge and expertise built up over three centuries has forged a modern path for William Clark & Sons from the manufacturing of technical garment fabrics to Earthed, our contemporary furnishing range.

Step back in time with a journey through Upperlands, Ireland's oldest linen village. Learn about the fabric of local history at the Flax Visitor Centre which is located in an old industrial building just across the road from the last surviving linen beetling machines (a process which dates from the 1730s).

Opening Times:

The Old Mill Tuesday - Saturday 10:00am - 4.30pm

The Flax Visitor Centre Tuesday - Friday 11:00am - 3:00pm

Saturday 11:00am - 1:00pm

t: 028 7964 3122

This exhibition opens 16th August



EARTHED
BY
William Clark
GROUP LTD



Our Linen Stories

3rd - 19th October | Lisburn City Centre

Leith, Selkirk, Amsterdam, Kirkcaldy, Lisburn, Newtonmore

Engaging Contemporary Designs, a new Design Commission, tales from a rich heritage of trade routes and industrial endeavour, talent and innovation on tour through Scotland, Ireland and The Low Countries: welcome to 'Our Linen Stories' touring exhibition and events.

We are delighted to exhibit in Lisburn as part of the inaugural Linen Biennale, to develop a programme with local schools and to offer insights unique to this tour stop relating to markets and the marketing of linen and flax, then and now.

Throughout our tour we are seeking Your linen Stories and would love to hear from you ahead of our stop in Lisburn. So many of us have a link to linen, from time in the industry to current design and manufacture with linen and flax composites. Check into our Website, Facebook and Instagram feeds. Sign up for our Newsletter via www.ourlinenstories.com

www.ourlinenstories.com

[@ourlinenstories](https://www.facebook.com/ourlinenstories)

[ourlinenstories/ #ourlinenstories](https://www.instagram.com/ourlinenstories/)

[@Ourlinenstories](https://twitter.com/Ourlinenstories)



LINEN

AT THE NATIONAL MUSEUMS OF NORTHERN IRELAND

Ulster Museum, Belfast

Botanic Gardens, Belfast BT9 5AB



Game of Thrones® Tapestry

1st - 27th August

The magnificent Game of Thrones tapestry, depicting scenes and characters from series 1 - 7 of the programme. Made principally of linen yarn, this almost 80 metre long tapestry is a superb example of contemporary jacquard weaving.

Please note: Due to the depiction of graphic scenes, viewing of the tapestry is **not suitable for anyone under the age of 18.**

t: 028 9044 0000

[f](#) VisitNMNI

[t](#) UlsterMuseum

[w](http://nmni.com/our-museums/ulster-museum) nmni.com/our-museums/ulster-museum (See website for Opening Hours)

Warp & Weft

1st - 27th August

An exhibition of archive images and prints illustrating linen production from the late 1700s to early 1900s in Ireland, together with selected linen samples from the collections at NMNI. This exhibition will be shown alongside the Game of Thrones tapestry.

In the context of Warp and Weft, the museum will present a programme of gallery demonstrations of embroidery and weaving, showcasing some of the traditional textile skills used to create and embellish linen. More details will be available on the NMNI website.

Ulster Folk and Transport Museum

Cultra, Holywood BT18 0EU

The open air museum at Cultra is the setting for **Ballydugan Weaver's cottage**. Here, the museum's linen weaver regularly demonstrates hand weaving of linen on an early 1900s draw loom. As the times of these demonstrations may vary please contact the museum in advance of your visit to confirm. Elsewhere in the museum, Sloane's Draper's shop exhibits original early 1900s examples of household linens and clothing.

t: 028 9042 8428

f VisitNMNI

t FolkTransport

Ulster American Folk Park, Omagh

Castletown, Omagh BT78 5QU

The open air museum at Omagh is the home of Murray's drapery store, exhibiting linen goods from an original Co. Tyrone family-run shop, circa 1900. The exhibition **A Step in Time** will tell the story of the history of Irish Dance through costume, lace and textiles. The exhibition will feature a 1933 dance dress and an example of Kells embroidery, both worked on linen.

t: 028 8224 3292

f VisitNMNI

t FolkParkOmagh

The Living Linen Archive

Based at UFTM, is a collection of over 300 oral interviews with people who have worked in the linen industry in Ulster during the last 70 or so years. To access this archive for research please contact the library at the museum. To request access to collections of linens in store at the museum (by prior appointment), please contact the Curator of Textiles, Valerie Wilson.





The Scutchers Story in Poetry

The Mills of Northern Ireland Project records and preserves the history and memories of mills across Northern Ireland.

In 2014 after working many years as a tour guide at a beetling mill **Sebastian Graham** decided to look at an old map of his surrounding townlands and discovered that mills were once a prominent feature on our landscape. He recorded the locations and listed the historic owners of the mills on an online mapping resource. So far he has mapped the location of over 3200 mills, visited over 100 and interviewed 10 former mill workers.

In 2017 Sebastian was awarded the public winner of the Heritage Angel Awards and is currently researching flax scutchers and their daily routines.

We are grateful to him for recording our milling history for future generations. Visit his website for further information.

 **MillsOfNI**

 **millsOfNorthernIreland**

 **millsOfNorthernIreland.com**

Visit the HORNER COLLECTION

Libraries NI, Belfast Central Library,
Royal Ave, Belfast BT1 1EA

The Horner Collection at Belfast Central Library is representative of Horner's main interest, namely textile manufacture. It comprises books and scrap books dealing with textile manufacture throughout the world. John Horner (1858-1919) was born in Belfast. He was a member of the Belfast Natural History and Philosophical Society and acted as its Treasurer and Secretary.

He gained notariety as the author of "The Linen Trade of Europe during the Spinning-Wheel Period", (1920). The collection comprises books on textile manufacture from the 19th century. There are also a number of scrapbooks which contain cuttings, advertisements and labels concerned with textiles. The collection also includes the journal "Repertory of Arts - 1794 to 1821".

[f LibrariesNorthernIreland](#)

[t librariesni](#)

[w librariesni.org.uk](http://librariesni.org.uk)

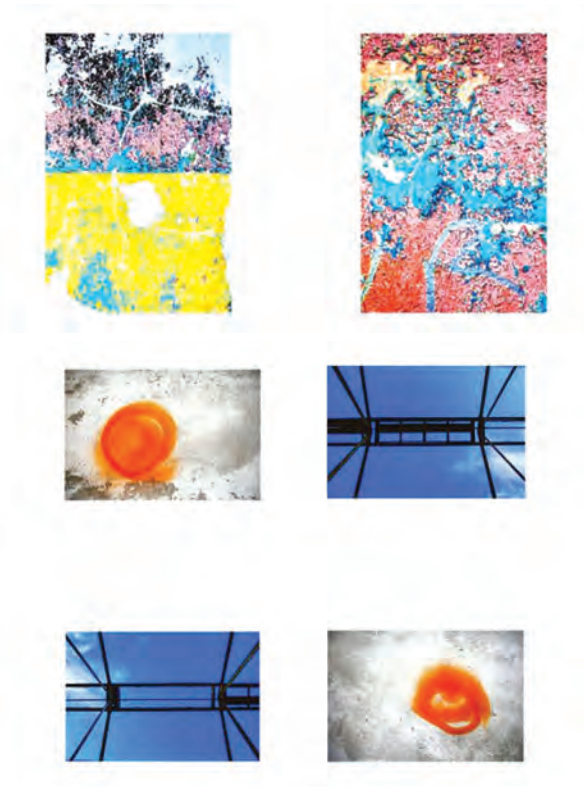


The Histories of factories in NI captured in contemporary photography

August - September | Sat & Sundays 1:00-5:00pm
The Barn Museum, Tannaghmore

Alex Lange's Photography is based on his fascination with the history of the factories in NI. In particular, how for hundreds of years entire townships were centred around them culturally and economically, yet now the factories sit largely empty and almost forgotten, despite their large material presence. He sees them very much as metaphors for loss, pain and fading memory; the work speaks about the artist himself as well as the factories.

[f craigavonmuseumservices](#)



Re-Call: Shuttles and Shafts

27th September - 26th October | Irish Linen Centre and Lisburn Museum, BT28 1AG

This Heritage Lottery funded project will showcase The William Liddell collection of glass plates used in the Jacquard damask weaving of Irish Linen dating back from the early to the 1900s. A selection of the original plates will be supported by documented findings from local linen communities. This exhibition not only sings praises to the past but investigates new techniques, inspired by the past looking forward. New work has been developed by Trish Belford (textile printer) and Barbara Dass (weaver) picking elements from their disciplines and through interrogation, testing and conversation have developed new textile ideas within their discipline and as hybrid subversions of their relevant skills. This work will be presented as a range of samples and sketchbooks outlining the innovative techniques created by bringing together a weaver and printer to engage with new ideas in response to the Liddell archive.

t: 028 9266 3377

✉ ilc.reception@lisburncastlereagh.gov.uk

🌐 LisburnMuseum.com

📘 [IrishLinenCentreAndLisburnMuseum](https://www.facebook.com/IrishLinenCentreAndLisburnMuseum)

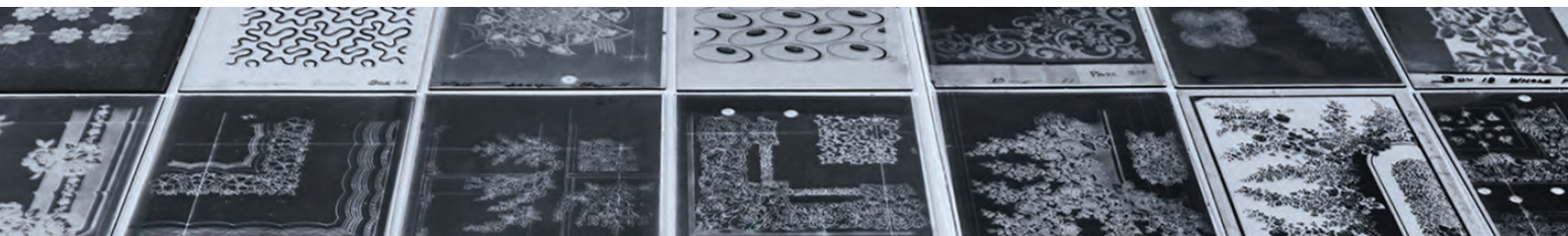
🐦 [Lisburn_Museum](https://twitter.com/Lisburn_Museum)



LIDDELL



VISION



Primary school workshops with Mill songs and games

September - October



Maurice Leyden and Jane Cassidy offer a workshop for primary aged children teaching traditional singing games, selected from Maurice's book 'Boys & Girls Come Out To Play' (Appletree Press). Well-loved songs and games like 'In and out the Dusty Bluebells' and 'Our Queen up the River' reminds us of an era when children sang and played in the streets, and took their songs into the linen mills and factories when they started as half-timers.

The workshop is lots of fun and gets the children up singing, moving to music, and working as a team. Maurice and Jane spend an hour teaching 6 or 7 singing games to one class of around 30 children – ideally P4 or 5. After a break, the rest of the school is invited to sit in a large circle.

Maurice and Jane teach the assembled children each song and the workshop class then demonstrate how the game is played with their school-mates belting out the song in support. By the end of the morning, the entire school has learned to sing and play at least 6 traditional singing games and had a great time in the process.

Organised directly with primary schools by invitation only





Flax to Laragh Linen - Treasures in a Field of Blue

Laragh Village, Castleblayney, Co. Monaghan | July - August - September

Visit the Tin Church Laragh and its field of flax for a unique multi-sensory 'Flax to Laragh Linen Experience'. We are Sowing, Growing and Weaving Flax to make the finest Irish Laragh Linen and we'd love to share the experience with you. We will be sowing the flax seeds in April and over the following 100 days we welcome you to watch the crop develop into a field of vibrant blue flowering flax.



Touch the flax. Look how tall and straight it grows. Examine its beautiful blue flax flowers which blossom for 7-10 days. Roll up your sleeves and help them Pull the Flax for Laragh Linen in early August which we will dry and process to make Laragh Linen.

t: 00 353 87 8957680

✉ laraghheritage@gmail.com

f [laraghheritage](https://www.facebook.com/laraghheritage)

Cathedral Vestments

Aug Sep Oct | St. Anne's Cathedral,
Donegall St, Belfast, BT1 2HB

Wilma Kirkpatrick and Helen O'Hare completed a commission for St Anne's Cathedral, Belfast which took approximately five years to complete from the first consultation with the then Dean of Belfast, the Very Rev. Dean John Mann.

Irish linen, supplied by Ulster Weavers of Northern Ireland, was used as the foundation fabric for all the pieces. These were embellished with appliqué hand dyed silk velvets and a mixture of hand stitching and digital embroidery. The linen stoles highlight the superb range of artefacts within the Cathedral building.

A selection of the work has been reproduced for the Linen Biennale.

Opening hours: Mon - Sat 9am - 5:15pm | Sun 1-3pm

Last audio tour at 4.45pm,

t: 028 9032 8332

f BelfastCathedral/

t BelCathedral

@ belfastcathedral/

w belfastcathedral.org/contact/





Fragments of Time

Conway Mill

13th - 31st August | 5-7 Conway Street
Belfast, BT13 2DE

'Fragments of Time' is both a collaboration and shared exhibition incorporating the work of artists based at Conway Mill.

Members of Artists At The Mill and Amps Studios, based in the Mill, have joined forces to explore Conway Mill's rich heritage taking for inspiration, both the physical and the anecdotal.

This will manifest through audio/visual work, textile installation and ceramic sculptural pieces. The exhibition will take place in, what is known as the Drying Room, one of the few areas that was not renovated and therefore very much as it was when the building was still a working mill.

 [@ArtistsattheMil](https://twitter.com/ArtistsattheMil)

 [@ArtistsAtTheMill](https://www.facebook.com/ArtistsAtTheMill)

 [@artistsatthemill](https://www.instagram.com/artistsatthemill)

Bessbrook Village Guided Tours

The quaint town of Bessbrook is a very early Quaker settlement and model village. It was built around the linen industry in 1845 by the Richardson family to house their workers. The layout remains as it was in that time with the local granite stone – of which it is made, and the original streets, terraces and squares.

Bessbrook can also boast the Craigmore Viaduct, an 18 arch viaduct sweeping across the valley of the Camlough river, as well as the National Trust's Derrymore House – an elegant 18th century thatched cottage built as a country retreat.

Guided tours of the village can be arranged to suit the interests of visitors/school groups.

**Contact: Samuel Hanna, 45 Millvale Road, Bessbrook,
t: 028 3083 0415. Admission: donations accepted.**



Flax Field Exhibition

3rd - 31st August | Monday to Friday:

10.00am - 4.00pm

17 Donegall Square North, Belfast BT1 5GB



'Flax Field' exhibition by Artist Josephine McCormick consists of paintings, embedded sound of flax being woven into linen, etchings and cyanotypes inspired by flax and the creative industry of linen. Working in partnership with Flax Mill Textiles at Dungiven and drawing from the extensive collection of Irish and Local studies at the Linen Hall library, McCormick has produced a visual celebration of linen as the fabric of Ireland. McCormick's works may be viewed on her website, www.josephinemccormick.com Follow her development of the exhibition flax field on her Facebook page Cre8NI

t: 028 9032 1707

[f](#) **LinenHallLibraryBelfast**

[t](#) **thelinenhall**

[w](http://www.linenhall.com) **www.linenhall.com**

[e](mailto:info@linenhall.com) **info@linenhall.com**



Linen Experience - through storytelling

Dawn Mitchell | Hillsborough Barn Gallery,
7 Main Street, Hillsborough, BT26 6AE



Working from the Barn Studio, behind her home, Dawn Mitchell is surrounded by her painterly garden, which supplies endless inspiration for her drawings, prints and botanical impressions in clay.

Layered multi - media pieces are created using letter writing to ancestors with images that evoke memories, these are painted, torn, and stitched onto linen to create original artworks.

This exhibition is inspired by the Linen Biennale 2018 and is a showcase for a small collection of work made with the vision of creating new works on linen, to celebrate the family links with linen, and also our collective Ulster Linen and flax heritage. Visit Linen Biennale website for information on dates and opening times.

t: 028 9268 8434

✉ dawn.mitchell@nireland.com

"The Living Loom" Exhibition

1st October - 30th November

10:00am - 5:00pm | The Mall East,
Armagh BT61 9BE

This exhibition charts the 300+ year history of the linen industry in North Armagh; from its 17th century beginnings as a cottage industry, through to its industrialisation in the 19th century which saw the mighty mills and factories come to dominate the skylines of Portadown and Lurgan, to its eventual demise in the latter 20th century. On display will be a range of artefacts, documents, photographs, oral history interviews and samples of the many linen products for which the area became renowned.



t: 028 3752 3070

Glitched

Exhibition | 3 August - 31 October | 9.00am - 5.00pm
Arches House, Arches Lane, Main Street,
Randalstown, BT41 3AB

Mairead McCormack is a textile artist based in Northern Ireland. Influenced by stories and artefacts from the Old Bleach Linen Factory in her hometown, Mairead is particularly interested in objects which reveal part of history, add to a narrative, or bear a small relevance to the world we live in today. Exploring traditions of the hand-made and the man-made, 'Glitched' is a juxtaposition of the old and the new, referencing the evolution of technology. Working mainly with Irish linen, Mairead investigates ways of bringing a human element into her work through embroidery which allows her to highlight the pace at which society is evolving. This has resulted in the intangibility of the very objects that inspire her but has also brought about technology with incredible potential. Mairead aims to question where these old traditions might fit in today's world and add more depth to what appears to be a very superficial modern society.

t: 028 9447 8471

[@MMcCormackArt](https://twitter.com/MMcCormackArt)

[@MaireadMcCormackArt](https://facebook.com/MaireadMcCormackArt)

[@maireadmccormackartist](https://instagram.com/maireadmccormackartist)

maireadmccormack.org

mairead123@hotmail.co.uk



Folksongs writing and singing workshop

Dónal Kearney is a singer, educator, and community artist based in Ireland.

To celebrate the 2018 Linen Biennale, Dónal will curate storytelling workshops and interviews as a way of empowering local people to talk about their connections to the linen industry (VOCALiSM).

Dónal will also conduct song-collecting sessions in local schools, which will involve a songwriting process whereby each class composes an original piece of music to celebrate the Linen Biennale (VOCALiSM).

TRÚ, comprising local musicians Zach Trouton, Michael Mormecha and Dónal Kearney, will host an evening of music and word to celebrate the linen songs of Ulster. TRÚ will perform local folksongs and create a soundscape to accompany spoken-word performances and other musical collaborations, inviting participants in the VOCALiSM workshops to perform their work.

Visit the Linen Biennale website for dates and venues.



25th Flax Mill Open Day and Yard Fest

8th September

Flax Mill Textiles, Mill Lane, Derrylane,
Dungiven, Co. L'derry, BT47 4QD

It's all hands on at Derrylane Flax-Mills when County Derry's only active linen-weaving-mill prepares to host its Open Day and Yard – Fest. You will enjoy an unrivaled gathering of the best crafters from these shores; meet designers, artists, spinners, weavers, dyers and textile-workers from far and near.

Expect special treats on the programme such as yoga sessions in the garden and cars from yesteryear. Add a healthy dose of fantastic folk musicians from home and abroad and you have all the ingredients to make a great day out for all the family. Visit their website for more information.

t: 028 7774 2655

flaxmill.eu/yard-fests

L I N E N S O N G

Exhibition | 1st September - 10th September
Oriel Gallery at Clotworthy House,
Antrim Castle Gardens



René Mullin is a Belfast based printmaker working from the Belfast Print Workshop and her own home print studio.

This work 'Linen Song' is her response to songs sung by linen workers in the 1900s in Ireland. The work reflects the repetition, structure, sparse, and gruelling reality of producing linen at that time.

The work acknowledges the femininity and camaraderie of the industry workers and the songs they sang during and after work, while producing Ireland's finest export.

[@kilnandloom](https://twitter.com/kilnandloom)

[f PlacedIreland](https://www.facebook.com/PlacedIreland)

[@placedireland](https://www.instagram.com/placedireland)

[w placed.ie](http://www.placed.ie)

Spinning Yarns - a Festival of Colour, Creativity and Craft

1 September & 2 September

10:00am - 6:00pm | Antrim Castle Gardens,
Antrim, BT41 4LH



SPINNING YARNS is a two-day festival celebrating the wonderful world of all things wool & linen where we will show case the colour,

creativity and craft associated with these homespun yarns. Highlights will include a market place with a wide range of traders, both local and from further afield, an afternoon tea tent, displays, workshops and demonstrations along with a range of artisan food & drink.

Visit the website to book your tickets
spinningyarnsfestival.com

Lagan Navigation Story Making Festival

6th August - 26th October

10.00am - 5.00pm


Lagan Navigation Trust,
Navigation House, 148 Hillsborough Road
Lisburn, BT27 5QY

Do you have a story, memory or link with the River Lagan or the Lagan Navigation? If yes, then why not get involved in the Storymaking Festival. It is open to people and community groups who are interested in the rich heritage of river, canal, land and water.

This year the Lagan Navigation Trust are keen to hear about Linen themed stories. With the history of the linen industry in Lisburn and the surrounding area we hope to hear about the many family stories of preparing and transporting goods along the River Lagan. Workshop events are happening in various locations along the Lagan Navigation waterway. Please check their website for further details and to submit a story.

 [@lagannavigator](https://twitter.com/lagannavigator)

 [@laganavigationtrust](https://www.facebook.com/laganavigationtrust)

 laganavigationtrust.org



Lucienne Day: Living Design

29th September - 10th November | Monday - Saturday | 10:00am - 5:00pm

Sundays: (June-July-August only) 1:00pm-5:00pm

F.E. McWilliam Gallery & Studio, 200 Newry Road, Banbridge, County Down, BT32 3NB

This exhibition celebrates the life and work of one of most influential designers of the post-war generation, Lucienne Day.

Lucienne Day: Living Design tells the story of Lucienne's design career, unfolding in a sequence of photographs drawn from the archives of The Robin and Lucienne Day Foundation. Lucienne Day, and her husband Robin Day, had a number of connections in Northern Ireland including relationships with Mourne Textiles and Ulster Weavers. The exhibition at the F.E. McWilliam Gallery will explore those connections.

The Gallery's location in Banbridge, historically associated with the linen trade and home of Fergusons' Irish Linen, will connect with both the historic and contemporary elements of the Biennale.

[f emcwilliamgallery](#)

[t FEGALLERY](#)

F.E. McWILLIAM GALLERY & STUDIO



Newry Clanrye Lace Group

1st October - 8th October | 10:00am - 5:00pm
Newry Library, 79 Hill Street, Newry, BT34 1DG

The exhibition will be complemented by a workshop which will provide an opportunity for people to experience the techniques and skills inherent in this particular lace. A member of the team will be present each day to explain the historical and social context of Clanrye Lace and the recently published manual will be available to purchase.



Linen Quarter Belfast

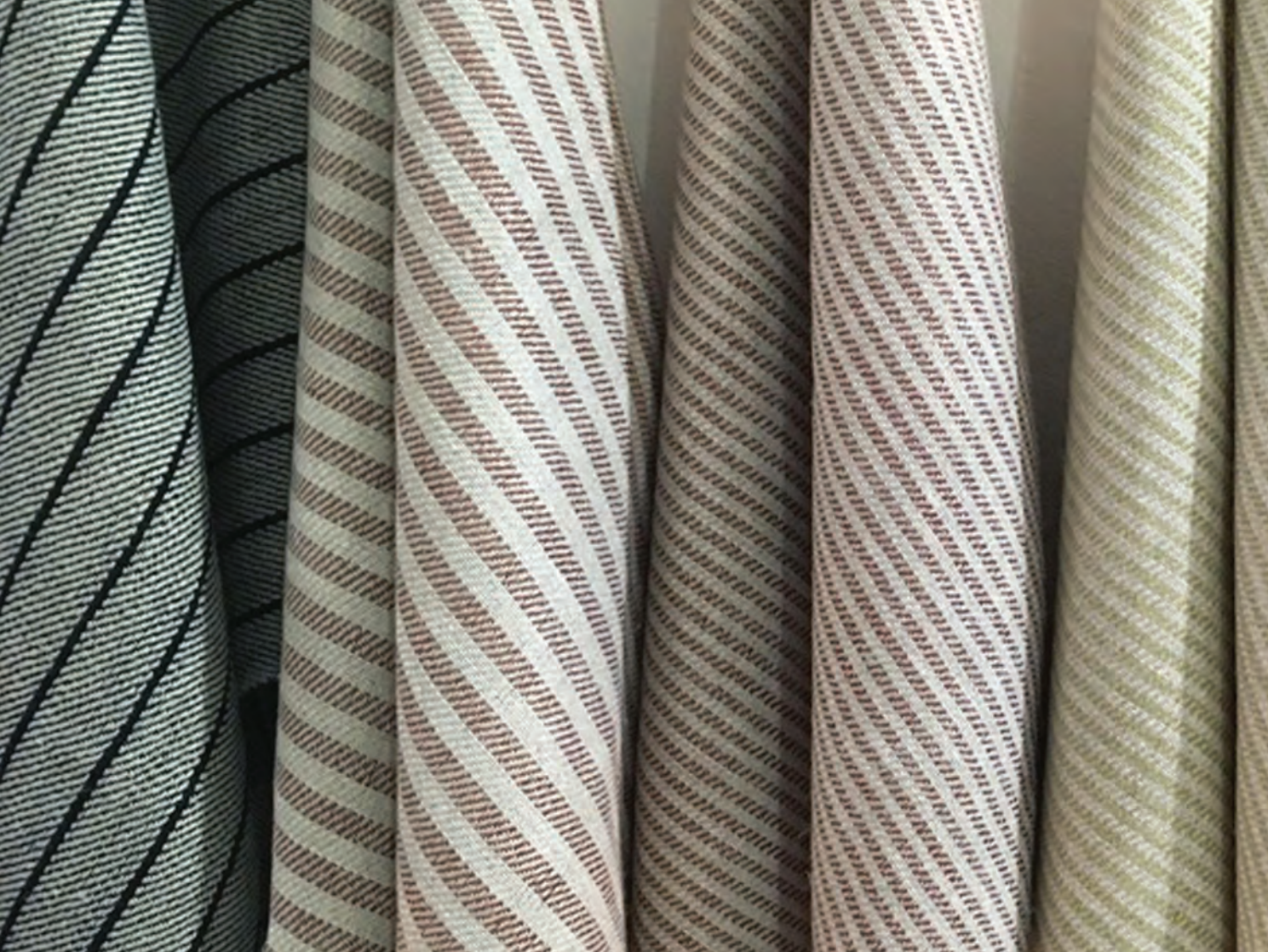
1 August – 30 September

Wednesday - Sunday | 10:00am - 5:00pm

Linen Heritage Centre, Bedford House,
16-22 Bedford Street BT2 7FD

From 1 August to 30 September Belfast's historic linen quarter will be hosting a pop up linen heritage centre and shop. Learn about the industry that transformed Belfast from backwater into boomtown, and quite literally laid the foundations of the city we know today. Find out more about the people who made Belfast the epicentre of global industry and the beautiful buildings that housed the trade. Discover how linen is made, view original artefacts, and have the opportunity to touch and feel the product. The Centre is staffed by linen makers from across N Ireland, who will happily engage with visitors to give unique insights into the product, and how it is being used in exciting and innovative ways today. A wellstocked shop contains a wide range of linen products from across the region – providing the opportunity to purchase unique items that are imbued with authentic N Ireland heritage.

— Rethink —————



LINEN

Exhibition | CHRISTINE MAUERSBERGER
MYLÈNE BOISVERT / SANDRA TURLEY
DAMIAN MAGEE / JILL PHILLIPS
3rd -29th August
Millennium Court Arts Centre,
2 William St, Portadown BT62 3NX

**ARTIST TALK: Christine Mauersberger,
3 August 7:00pm**

This exhibition is part of the first Linen Biennale Northern Ireland, a celebration of the past, present and future of Europe's oldest textile.

For further information please see
linenbiennialnorthernireland.com.

t: 028 3835 0935

✉ info@millenniumcourt.org,

🌐 www.millenniumcourt.org



Armagh City
Banbridge
& Craigavon
Borough Council



REGIONAL
FUNDER
arts
council



arts
council
LOTTERY FUNDED



Flax Flower Fields Installation in the Sculpture Garden

1st August - 31 October

McWilliam Gallery & Studio,
200 Newry Road, Banbridge, BT32 3NB



Flax Flower Fields Installation in the Sculpture Garden

A Community Arts installation initiated by the Friends of the F. E. McWilliam Gallery & Studio in association with Trevor Woods.

The installation celebrates the linen heritage of the Borough in this the Gallery's 10th anniversary year.

t: 028 4062 3322

f emcwilliamgallery

t FEGALLERY



Hand Printing Irish Linen

September 29th - Saturday 10th November

Emma Forde | F.E. McWilliam Gallery



Running in conjunction with the exhibition Lucienne Day: Living Design held at the F.E McWilliam Gallery, Banbridge, from Saturday 29th Sept. - Saturday 10th November. Artist Emma Forde of Seaforde Print Works will be running a series of participatory live screen printing events. The sessions will provide an insight into the artistic process of creating patterned cloth, sketching the subject matter to create artwork, manipulating the imagery digitally to form the designs. The works will be inspired by Lucienne Day's archive, Irish Linen heritage and the environmentally friendly nature of Linen cloth production.

For dates and availability
see www.femcwilliam.com

www.seafordeprintworks.co.uk

Craft workshops — Young At Art

Young at Art workshops

Belfast and Lisburn venues to be announced on the Linen Biennale website.

linenbiennialenorthernireland.com

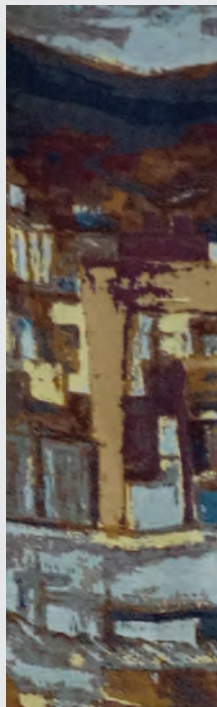
For Young people under 12 years

The children will have an enjoyable experience learning about linen and flax followed by a hands on workshop using art materials to bring their learning to life. They will bring their made items home to share with family and friends showing their newly acquired skills and linen heritage knowledge.



Belfast from the Hollywood Hills —

Exhibition | PRONI, 2 Titanic Boulevard, Titanic Quarter, Belfast, BT3 9HQ



Cecilia Stephens is a weaver, painter and printmaker. This work was produced with the assistance of Textiel lab, Tilburg, Netherlands, using their state of the art equipment. Designed by transferring a digital image to the computerised control system, and then working through the colour and textural choices that such a system allows, arriving at a finished design and piece.

There are eight colours employed in the weft which were then multiplied up to approximately forty by careful rearranging of the proportion of each that is on the surface at any particular point of the design.

There are names of a few of the many weavers employed by the linen industry in the 1930s woven into the design. This information was gleaned from records in the Public Records Office NI.

Available to view in PRONI from 9th August.

Visit Linen Biennale website for more information.

www.linenbiennialenorthernireland.com

War Torn Children

5th September - 29th November
Roe Valley Arts and Heritage Centre,
24 Main Street Limavady, BT49 0FJ

This Conflict Textiles exhibition of arpilleras, photographs and reproduced illustrations, commissioned by Causeway Coast and Glens Borough Council (CCGBC) Museum Service highlights the devastating impact of war on children, their families and communities.

More information to be found at CAIN Ulster website
ulster.ac.uk/conflicttextiles

Commissioned by: Museum Service Causeway Coast
and Glens Borough Council (CCGBC)

Curator: Roberta Bacic, assisted by Breege Doherty
Facilitator: Helen Perry and Sarah Carson CCGBC
Image: Eileen Harrisson

t: 028 7776 0650

[f information@rvacc.co.uk](mailto:information@rvacc.co.uk)

[ⓧ roevalleyarts](http://roevalleyarts)





Message from Anthea McWilliams

Co-Curatorial Director, R-Space Gallery and co-founder of the Linen Biennale



I hope you are enjoying looking through our programme and have selected as much to see and do as you possibly can. Feel free to call in to R-Space gallery in Lisburn where you'll find us during exhibitions, sharing stories and reflections on All Things Linen. If you have time, I would be more than delighted to give you an impromptu tour of the Georgian building (my childhood home) and how it has come to be called The Linen Rooms.

I dream that one day it will be the visitor destination I once imagined, hosting guests and artists from all over the world who can then enjoy themselves surrounded by All Things Linen. If this inspires you and you would like to support R-Space to realise this dream, please get in touch.

t: 028 9266 3179

t: rspacelisburn

f: rspacelisburn

R-Space gallery is a charity that relies on funding and donations to bring our Linen Biennale programme to life. Please visit our website to donate to our Linen Biennale 2020. linenbiennialenorthernireland.com

Charity No: NIC106350

R-space, The Linen Rooms, 32 Castle St, Lisburn BT27 4XE | Opening times: Tuesday - Saturday 11am - 5pm



Linen Futures

Exhibition | 4th - 26th August | July & August

Monday - Saturday 10:00am - 5:30pm

Sunday 12:00pm - 5:00pm

Art in the Loft | Portaferry Visitor Information
Centre, The Stables, Castle Street,
Portaferry, BT22 1NZ

Curated by designer Jane McCann and textile artist
Cecilia Stephens.

This exciting exhibition represents a unique collaboration between makers and practitioners from South Wales and Northern Ireland. Focusing on innovative approaches to celebrating Northern Ireland's rich Irish linen heritage the exhibition demonstrates a wide range of textile skills including print, weave, embroidery, natural dyeing and garment making.

The group will be joined by Sirpa Mörsky, from Finland, who is a highly skilled practitioner with a long history of engagement with flax, linen and all its processes.

t: 028 42 729882

[w visitardsandnorthdown.com](http://www.visitardsandnorthdown.com)

[e portaferryvic@ardsandnorthdown.gov.uk](mailto:portaferryvic@ardsandnorthdown.gov.uk)

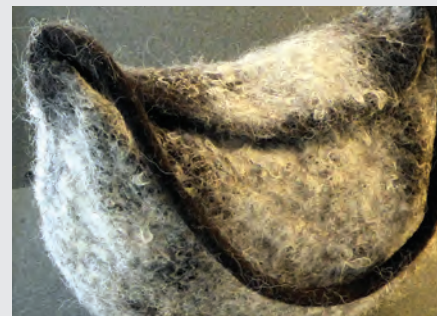
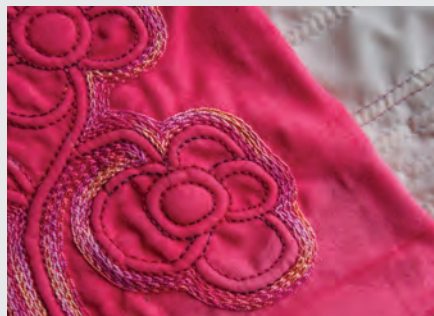
Image: Claire Cawte



Workshops: Lands End, Warren Road, Donaghadee

August Craft Month | Linen Biennale Workshops for Adults

Date:	Workshop	Facilitator	Duration	Cost
03.08.18 & 05.08.18	Textile Jewelry: Making a contemporary accessory Two separate workshops (morning on 03.08.18 & afternoon on 05.08.18)	Susan Smith susanstitchsmith@gmail.com	10:00am - 12.30pm 2:00-4:00pm	£25
03.08.18 & 05.08.18	Italian or Corded Quilting Two separate workshops (afternoon on 03.08.18 & morning on 05.08.18)	Elspeth Thomas elspeth.thomas1@tesco.net	2:00 - 4:00pm 10:00am -12.30pm	£25
04.08.18	Textured Felt Bag	Mandy Nash mandynash333@gmail.com	10:00am - 4:00pm	£50



Email the facilitator to book your place on the workshop. Spaces are limited



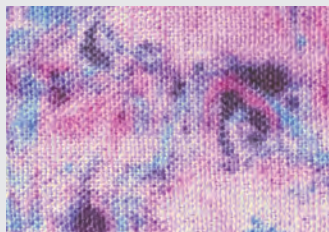
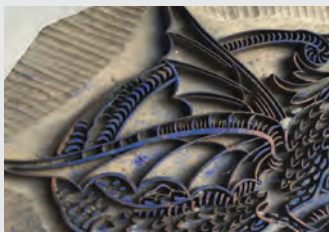
Date:	Workshop	Facilitator	Duration	Cost
06.08.18	Experimental Weaving	Cecilia Stephens (NB: Portaferry) ceciliastephensartist@gmail.com	10:00am - 4:00pm	£40
11.08.18	Pattern Making and Experimentation: Turning a garment image into a silhouette.	Jane McCann & Sirpa Mörsky jane.mccann47@gmail.com	10:00am - 4:00pm	£45
12.08.18	Drawing a Linen Garment and its Story	Sue Shields suestanleyshields@btinternet.com	10:00am - 4:00pm	£40

Email the facilitator to book your place on the workshop. Spaces are limited

Workshops: Conway Mill, Belfast

August Craft Month | Linen Biennale Workshops for Adults

5-7 Conway St, Belfast BT13 2DE Phone: 028 9024 9646



Date:	Workshop	Facilitator	Duration	Cost
09.08.18	Living with Linen: An illustrated talk on Fiona's journey with textiles with an emphasis on Irish Linen	Fiona McKelvie info@mcburneyandblack.com	10:00am -12.30pm	£20
15.08.18	Surface Design for Linen using heat Reactive Dyes	Shauna McGowan info@shaunamcgowan.com	10:00am - 4:00pm	£80
16.08.18	Surface Design for Linen – Marbling	Shauna McGowan info@shaunamcgowan.com	10:00am - 12.30pm	£35
18.08.18	Make a Mini Quilt	Heather Burgess heather.burgess@btinternet.com	10:00am -12.30pm	£20

Email the facilitator to book your place on the workshop. Spaces are limited

Date:	Workshop	Facilitator	Duration	Cost
Day 1: 19.08.18 Day 2: 26.08.18	A two-day beginners Screen Printing Workshop with Irish Linen from hand-drawn imagery	Emma Forde emmafordeprints@gmail.com	10:00am - 4:00pm	£125 2-day
20.08.18	Pattern Making and Experimentation: Turning a garment image into a silhouette.	Jane McCann & Sirpa Mörsky jane.mccann47@gmail.com	10:00am - 4:00pm	£45
30.08.18	Experimental Weaving	Cecilia Stephens ceciliastephensartist@gmail.com	10:00am - 4:00pm	£40



Email the facilitator to book your place on the workshop. Spaces are limited

Linen Family Tree Panel workshop

22nd September | 10:00am – 4:00pm

Top Floor Art, 92 Main Street, Saintfield, BT24 7AB

(max numbers 10) £60 includes refreshment through the day & lunch catered by Tribe



Explore your family history and create a beautiful, Irish linen panel to illustrate your research.

In this full day workshop, research expertise will be provided by the Crafty Historian, Dr Pamela Emerson. She will help you explore your genealogy and use the internet and local street directories to delve into your family history.

With the details pinned down, textile artist Emma Whitehead will provide you with all the guidance and materials needed to transform your hard work into a beautiful Linen Family Tree.

Using Irish linen from Master Weavers, Flax Mill Textiles, and by applying applique and embroidery techniques you will create the tree, including leaves with text, illustrating your family history.

The workshop takes place amidst the inspiring artworks in Top Floor Art's new Textile Studio Gallery, lunch is included on the day - please advise of any special dietary requirements when booking. Ages 12+ Children accompanied by an adult.

t: 082 9751 9266

f topfloorart

t @TopFloorAt

p topfloorart

i topfloorart/

Modern Pinafore Apron

Workshop

15th September | 10:00am - 1:00pm

Top Floor Art, 92 Main Street, Saintfield
Co. Down, BT24 7AB


This workshop will guide you in the creation of your own modern pinafore apron. The pinafore apron (also known as the cross-over or Japanese apron) was traditionally crafted in linen, due to its exceptional coolness and freshness in warm weather. It has several utility pockets, which were useful in the kitchen or the garden. The pinafore apron was highly fashionable as a decorative garment, especially for children, in the early 20th century. This workshop focuses on a modern take on this style of apron, which is currently being revived as a uniform for trendy baristas. An apron was once used as an introduction to sewing in school, and this workshop is a fantastic opportunity for those interested in dressmaking but don't know where to start. Knowledge of using a sewing machine required. There are some machines available, however, you are welcome to bring your own.

Workshop price £45

If you wish to bring your own linen, price £25

Tickets available here craftadventureworkshops.com/linen-biennale-modern-pinafore-apron-workshop/

 [craftadventure_](#)

 [craftadventure](#)

 [craftadventureworkshops](#)

 craftadventureworkshops.com



Interwoven

Exhibition | 6th - 24th September

Belfast Print Workshop, 2 Cotton Court, 30 - 42 Waring Street, Belfast, BT1 2ED

Three women artists / printmakers Raquel Amat Parra, Anushiya Sundaralingam and Majella Clancy come from Spain, Sri Lanka and Ireland. This exhibition explores and rethinks ideas around linen, its historical significance in Northern Ireland as well as its links to wealth, purity and hierarchical status. We are interested in linen as a material that is worn, folded, dyed, woven, cut up and reused and explore ideas of rethinking and reimagining as process. Ideas of flax and linen thread as line are explored as well as the domestic connotations of linen usage. In particular we are interested in the way in which ideas from the linen industry and printmaking can work together to reflect the intricate nature of the material and its far reaching influences.

The raw materials associated with linen are important and the way in which they can become transformed through printmaking processes. The exhibition comprises of several components including (linen) paper, fabric, linen, as well as techniques such as screenprinting, monoprinting, drypoint and lithography.

www.majellaclancy.com



 **FTDC Fashion**
Fashion & Textile Design Centre
fest show
 October

The Fashion & Textile Design Centre in Derry is running a 10 week linen pattern drafting and garment making course with local schools and colleges using Irish linen, kindly sponsored by Baird Mc Nutt, Ballymena. The students are taken through design development, illustration, pattern cutting and make up of garments.

The students have been encouraged to look at innovative ways to design and make their linen garments and are experiencing different forms of creating texture, from embroidery to print. The designs will be showcased at Derry / Londonderry's Fashion Fest in October as part of the Linen Biennale festival.

 fashionanddesignhub.com



Lavish and Judicious

Exhibition | Centre for Contemporary Art (CCA)
 10–12 Artillery St, Derry~Londonderry BT48 6RG



Coinciding with the Linen Biennale, Lavish and Judicious explores the radical, political, social and artistic potential of production. A key reference point for this exhibition is Sion Mills, a model village in Strabane developed in the 1800s as a site of linen production and a social experiment, providing a range of facilities for the welfare of its mill workers and their families.

The exhibition, through different artistic responses, examines the possibilities and tensions that exist in productivity, and how manual labour can generate collectivity and community, imagine new futures and interactions, as well as question contemporary systems of production.

Visit venue website for more information.

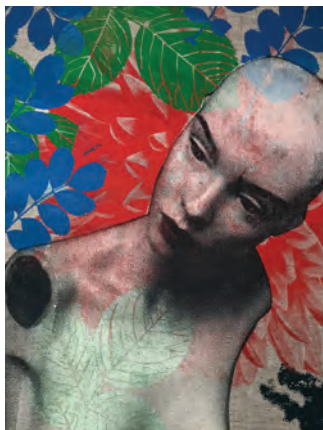
t: 028 7137 3538

 cca-derry-londonderry.org

LUCY TURNER WORKS ON PAPER AND LINEN

Exhibition | 4-27 October

Sunburst Gallery, Ards Art Centre, Town Hall,
Conway Square, Newtownards, BT23 4NP



I allow images to evolve, popping through layers of colour and texture. My approach to printmaking is eclectic and I combine many processes, with drawing, mark making and photographic references. For the Linen Biennale 2018 I will be referencing contemporary poetry from the North of Ireland, working closely with poets combining their words with image on linen and paper.

t: 028 9181 0803

✉ ards@ardsandnorthdown.gov.uk

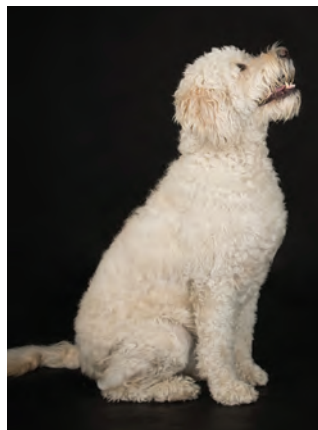
f www.facebook.com/ardsarts

t twitter.com/ardsarts

The Irish Linen Groom and Spin

6th October | Workshop | Sharon Kallis

Frocess Yard, 81 Old Frocess Road,
Ballymena, BT44 9NA



The Irish Linen Groom and Spin invites dog owners, spinners, knitters and linen enthusiasts to reconnect to a shared cultural tradition of blending fibres for spinning.

Local dog fur will be carded with linen tow creating a fibre blend. Hosted by Sharon Kallis, EarHand's founding director and lead research artist.

f [frocessyard](https://www.facebook.com/frocessyard)

ig [@frocess_yard](https://www.instagram.com/frocess_yard)

w frocess-yard.co.uk

ISLAND

Arts Centre

LISBURN BT27 4RL

LOST IN LINEN Exhibition

www.islandartscentre.com

Preview Wednesday 26th September 2018 | 7pm

Continues 27th September - Friday 26th October 2018

Open Times Monday - Friday 9.30am - 9.30pm

Saturday 9.30am - 4.30pm

t: 028 9250 9509

[w](http://www.islandartscentre.com) islandartscentre

[f](https://www.facebook.com/islandartscentre) islandartscentre

[t](https://twitter.com/ISLANDartsbiz) ISLANDartsbiz



Precious Threads

Exhibiting | Claire Mooney



The celebration of local heritage and appreciation for simple living is at the heart of my work.

As a Jeweller and Silversmith, I seek to make valuable objects inspired by elements of our past. 'Precious Threads' is a series of jewellery pieces which incorporate found linen threads and spools on sterling silver and other metals. Through juxtaposition and combinations of materials I encourage viewers to perceive value in discarded and forgotten objects, once precious to our people and economy. These intimate and wearable works are to remind us of our rich and precious textile heritage and encourage a conversation of its importance once more.

 [clairescraftcorner](#)

 [felting_fox](#)

 feltingfox.co.uk



Towel (2018)

Exhibiting | Tim Parry-Williams

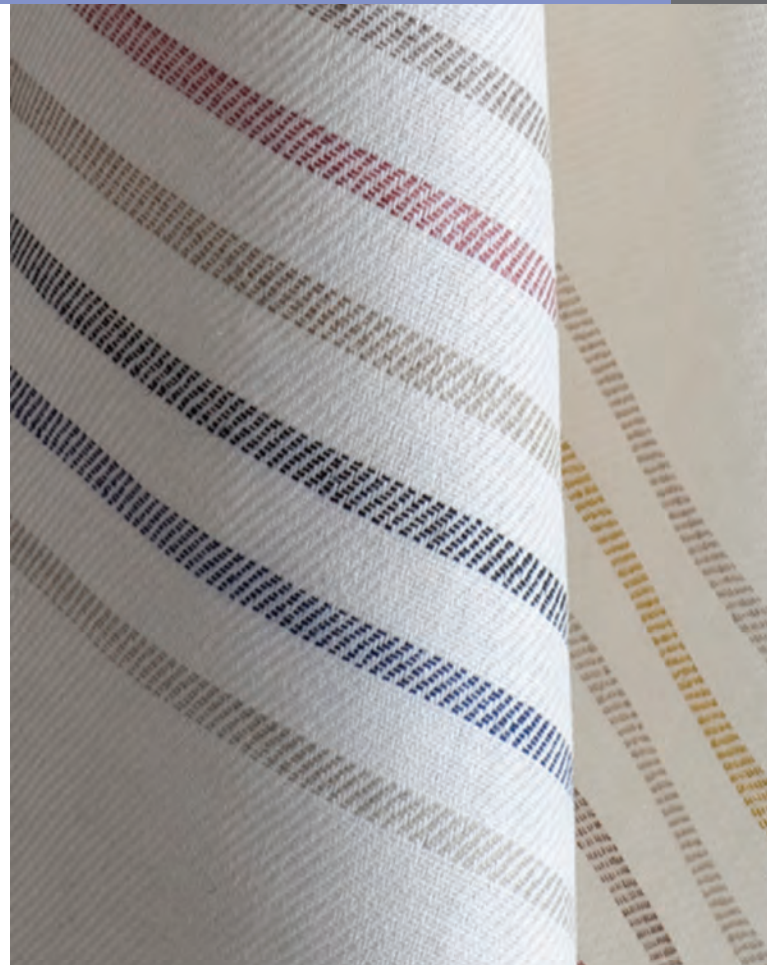


Tim Parry-Williams, is an educator, writer, curator and consultant, but first-and-foremost a weaver.

Tim Parry sustains a studio practice focused on the hand-making of fashion and interior accessories, and applied arts. Working with crafts people, designers, industry and museum partners, he is engaged with worldwide projects, exhibitions, publications and conferences.

For the Linen Biennale he will be exhibiting *Towel (2018)*, the latest in a portfolio of projects that set out to challenge the adage of 'too nice to use'. These hand-woven units, include original Northern-Irish spun linen (Andrews), rooted in 'traditional', simple language of warp and weft. Celebrating the inherent qualities of linen to be both treasured and enjoyed.

 [@timtheweaver](https://twitter.com/timtheweaver)



Narrowing The Distance: Linen Inspirations

Exhibiting | Elin Johnston

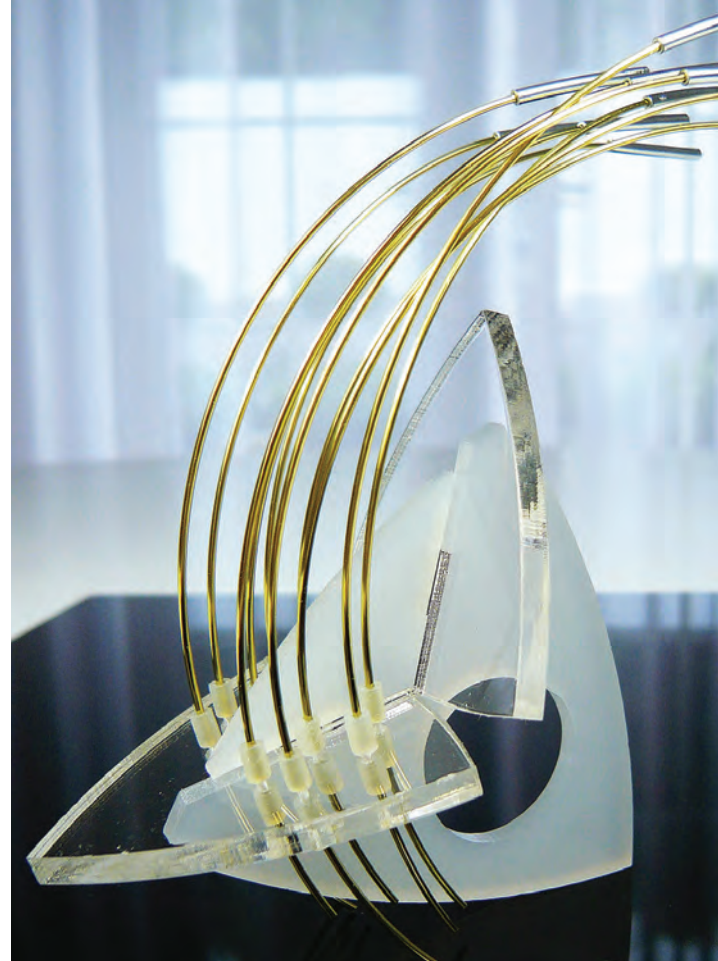


The Project is aimed at interpreting and honouring the associations and ties between the Linen Industry and the people who committed their lives to it, furthering recognition of origins, belonging, and identity.

Through abstracted and stylised interpretation of aspects of Linen Chronology, Production, and Typography, the artistic ethos evidences, celebrates, and makes relevant these cultural narratives using contemporary visual language.

The core creative aspect, draws upon the 'Visual Vocabulary' of Linen in it's broadest sense, inspiring novel perspectives of form and technique, producing a re-evaluation of the meaning of adornment and a body of work which can be more fittingly characterised as 'Wearable Sculpture' or 'Wearable Art'.

Elin has an extensive background in 3D Design, Design Education, and Design Consultancy, and holds a BA[Hons] in 3D Design and a MA in Industrial Design. Her award winning work has been exhibited in London and Dublin, and throughout N.Ireland.



Ceramic Artist

Exhibiting | Anna Smyth



Anna graduated from Ulster University, Belfast School of Art in 2017 with a First Class Honours Degree in Contemporary Applied Arts - Ceramics.

Work from her degree show has been selected for the trophy for the First Trust/Ulster University Distinguished Graduate 2017 Award and also by the Royal Ulster Academy for inclusion in the 136th Annual Exhibition 2017/2018. Her first solo show was held in November 2017 and she has recently completed a residency at Belfast School of Art.

She uses porcelain, a pure and sensitive material, as another voice with which to speak, in a visual, three dimensional language.

This installation responds to the current interest in the Linen industry; sensitively using her own family history to inform the work.



From Flax Cultivation to Weaving Linen Cloth

Exhibiting | Sirpa Morsky



All of my woven works are for every day life not for the cupboards.

When studying at Wetterhoff Institute of Craft, Design and Teacher Education in Hämeenlinna, Finland in the late 70s I was interested in gaining knowledge about flax cultivation using old traditional methods and tools. Finally I managed to get a piece of land for my own flax field, size 25 x 25 meters, and engaged in raw flax treatments to make linen fibre (including the following steps - pulling, stooking, threshing/rippling, sea/field/snow retting, drying, breaking, scutching, hackling/heckling).

Then spinning yarn from my own fibres using either spindle or spinning wheel, in order to weave fabric, and finally to sew a range of products. All of my woven works are for every day life not for the cupboards, and as we say in Finland "Linen gets better when used".

 **Sirpa Morsky**

 **sirpamorsky**



A Year of Appointments: Walk in My Shoes

Exhibiting | Heather Burgess



"You can't understand someone until you've walked a mile in their shoes"

"You can't understand someone until you've walked a mile in their shoes" An expression I found myself uttering in varied ways on occasion when dealing with my diagnosis of Cancer. In 2012 I was diagnosed with Thyroid Cancer at the age of 32. In response to the above a pair of shoes for each appointment in the first year of becoming a cancer patient have been created documenting, dates, feelings, information etc. Linen fabric is used for its properties of strength, durability and history, reflecting on life as a cancer patient. You have to walk into places and situations you fear the most, that you want to run a mile from, but have no choice in facing, the strength and durability to walk that path are naturally there, but not always apparent. Now as times goes on medically I have a "history".

 [ragbutton](#)

 [Rag-Button](#)

 [ragbutton](#)

 [ragbutton.co.uk](#)



Bricolage Quilts

Exhibiting | Sinead Black



Bricolage is a small design studio based in Northern Ireland and is the culmination of my working life spent in design, architecture + academic teaching.

Bricolage has a simple and pure ethos, designing and making quilts blending traditional hand-making processes with contemporary colour combinations. All linens I use are woven locally by Flax-Mill Textiles in N. Ireland. I selectively dye some cloth using native Irish plants and hand stitch the quilts which is a long but satisfying process. I blend the richness of the Irish linen tradition with the minimalism of modern design, to produce heirloom items. My linen quilts have appeared in The Irish Times, Liberty of London Design Call, Simple-Shape's first pop-up store in Brick Lane, London and been shortlisted for the 'Irish Made Awards' in 2017. I have recently participated in Crafted Vancouver. My work has been featured in 'Our Linen Stories' touring exhibition, Edinburgh in May 2018 and the exhibition 'Contained' at Frosses Yard, August 2018

[f bricolagequilts](#)

[i bricolagequilts](#)

[w bricolagequilts.com](http://www.bricolagequilts.com)



Shirt

Exhibiting | Tara St. James

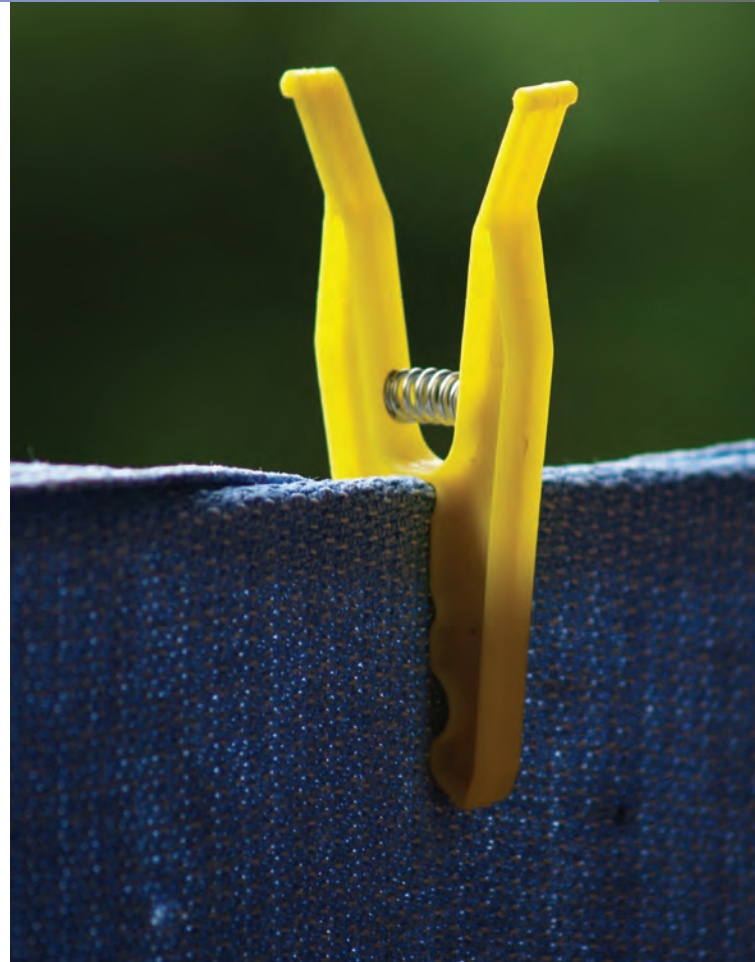


Tara St James, Production Coordinator and Research Fellow at the Pratt Institute, Brooklyn Fashion + Design Accelerator has produced linen shirts that have been tested for their durability.

“The way that materials and garments are created are in constant change there are continuous dialogues between the appearance and functionality of the clothing. Sustainable design examples emerge as alternatives next to mass production”. Textile Futures Talks Pratt Institute 2017.

Tara St James, Production Coordinator and Research Fellow at the Pratt Institute, Brooklyn Fashion + Design Accelerator has produced linen shirts that have been tested for their durability.

 @StudyNY



Celebrating Northern Ireland's Shirt Making Heritage

Exhibiting | Jane McCann



I believe in ageless and enduring design with the potential for a multiplicity of styles appropriate for an inclusive audience.

I have approached the customization of a basic shirt block through simple and non-transient styling that values the attributes of linen as a durable and relatively sustainable fibre. Each shirt has been designed with the details of the styling resulting from collaboration with individual project partners. Ultimately I endeavor to raise awareness of the value and sophistication of textiles, and linen in particular, through longevity of design that may enable a garment to become the wearer's 'old friend'.



Image: Ann and Asa

'Linen Time'

Exhibition | 4th – Sat 27th October | Flax Gallery, Museum at the Mill, Carnmoney Road, Newtownabbey, BT36 5QA

An exhibition of new work by Emma Whitehead. Emerging from her recent training with the British Horological Institute in February 2018, Emma uses her learning in the adaptation of mechanical watch movements to explore the concepts of time spent and time given. Creating a host of insects, swarming across a sea of Irish linen she references the 18th and 19th century obsession with time intertwined with the rise of industrialisation, and explores our relationship with the manufacture of what was previously handmade.

Earth & Beyond Oriel Gallery, Antrim

September 2018 | Oriel Gallery, Randlestown Road, Antrim BT41 4LH



Emma explores the journeys we take through space. Using found and recycled objects she reanimates them by creating mixed media embroideries that invite the viewer to imagine the journey our material possessions take once we've thrown them away. Hand stitched in silk on Irish Linen produced in Northern Ireland at Flax Mill Textiles, Dungiven. These embroideries are created using merino fibre and recycled elements including; acrylic, yarn, velvet, beads, metal, glass, paper, circuit boards & watch movements.

t: 028 9448 1338

🐦 craftadventure

📘 craftadventure

📷 craftadventureworkshops

🌐 craftadventureworkshops.com



Reform: Linen Lace Concrete

Exhibition | 27th September - 26th October

Irish Linen Centre & Lisburn Museum, Lisburn BT28 1AG

This exhibition will showcase innovative linen lace concrete surfaces, the culmination of a 1 year AHRC (Arts Humanities Research Council) project.

Trish Belford (Textiles) and Ruth Morrow (Architecture) have worked together for 12 years developing patented textile and concrete surfaces. This exhibition will be the first showing of the results from this project, a multi-disciplinary collaboration with MYB Textiles lace weavers in Scotland, Queen's University and Ulster University. Designs are sourced from the archives of Northern Irish damask weaving company William Liddell. The project is supported by textile expertise from Ulster University and concrete expertise from Queen's University Belfast, developing new surfaces investigating both flat and curved elements.

t: 028 9266 3377

✉ ilc.reception@lisburncastlereagh.gov.uk

🌐 LisburnMuseum.com

📘 [IrishLinenCentreAndLisburnMuseum](#)

🐦 [Lisburn_Museum](#)



LIDDELL



Practiced Hands

Screening | Drying Room in Conway Mill,
Belfast BT13 2DE

Performances 4 & 5 October
6.30pm - 8.30pm

For the Linen Biennale members of Pollen Studio will hold two evening events of archival film and performance. Alongside the screening of scenes from the local linen industry and the significance it had upon working women, artists Jayne Cherry and Alice Clark make live performance re-evaluating the significance of linen and the ways it can be repurposed for today. The cloth has an illustrious past but how do we imagine a future for the cloth in a consumer society which disregards waste.

These events are in partnership with Film Hub NI and showcases footage from the Northern Ireland Screen Digital Film Archive. It is funded by BFI Film Audience Network supported by The National Lottery.

For more information go to

 linenbiennialenorthernireland.com

 [linenaliveni](https://www.instagram.com/linenaliveni)

 [@LinenAliveNI](https://twitter.com/LinenAliveNI)

 [LinenAliveNI](https://www.facebook.com/LinenAliveNI)

 pollenstudiobelfast.com



Flax Paper Clay Workshop

30th - 31st August | Isobel Egan and Michael Moore

The Project Workshop invites 12 participants to work over a 2-day period in August 2018 to examine this material. The Workshop will be supported by technical demonstrations in regard to clay preparation, hand building and throwing, firing and glazing Flax paper clay.

The Workshop will also examine themes relevant to the material qualities of Flax and Linen - weaving and stitching clay, blending, dying and staining clay bodies leading to constructed forms from flat sheets of paper clay.

Lectures and presentations will examine artists and designers who create ceramic works from blended clay and flax which will also support starting points for Workshop participants. Test pieces and finished objects made from paper clay will also be available to participants to examine and handle.

The Ceramics Studio of Ulster University is fully equipped to support this Project Workshop and participants will have open access to slab rollers, wall mounted extruders, wheels, spray booths, clays and glazes and the kiln room'. To book your ticket at £75 per person please contact Ulster University.



Photo credit: Rory Moore

Una Curley

10th September - 10th October

Thursday - Sunday 11:00am - 4:00pm

Tourist Office The Market House, Monaghan.

Viewing outside those times by prior appointment with the artist.

The old dance hall in the beautiful heritage village of Mullan, in North Monaghan is the setting for this art installation by artist Úna Curley. Her work with flax, linen and rushes stem from her research into the human side of flax farming, starting on her grandparents flax farm near Mullan village. Through it she discovered the community effort involved in gathering the flax and the importance of the rushes and making the rush-bands for tying up the flax bundles. Until the early 20th century the village Flax Mill was thriving and had an international reputation for the manufacture of Bullock Irish Serge. It fell into disuse and in 1924 been turned into a shoe factory making “boots for farmers by the sons of farmers”.

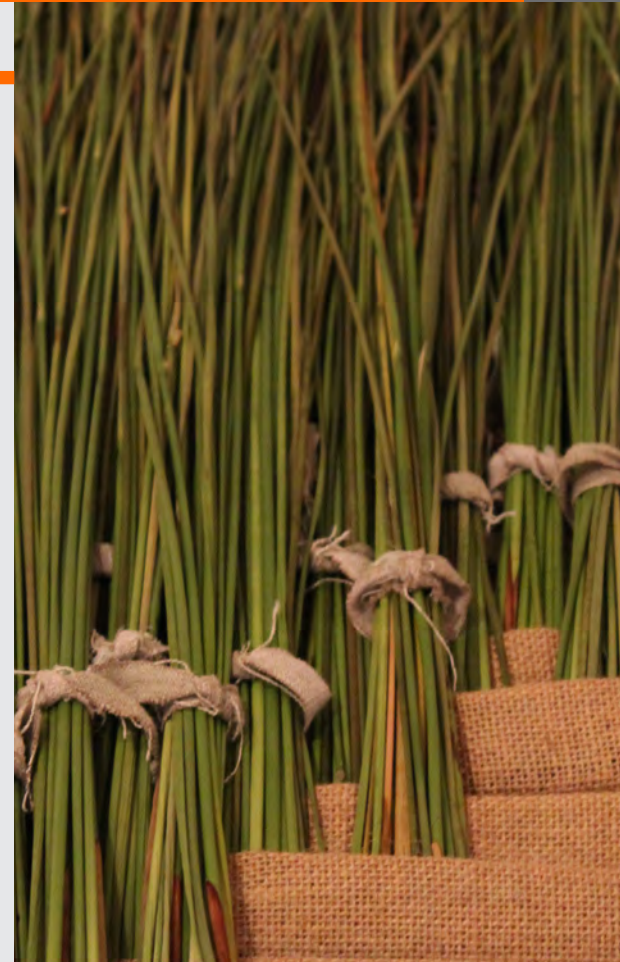
The village had remained virtually unchanged until the village was purchased in total and is now being sensitively restored along heritage guidelines while the mill is again a hive of activity.

t: +353 (0) 47 81122 (March to September)

m: 087 681 2031

[w unacurley.com](http://www.unacurley.com)

[e artist1rushnot@gmail.com](mailto:artist1rushnot@gmail.com)



FROM THE FIELD

Exhibition | 1st August - 7th September | Tuesday - Saturday 11.00am - 5.00pm
R-Space Gallery, 32 Castle Street Lisburn, BT27 4XE





Anna Dumitriu, an internationally recognised BioArtist, will present a new solo exhibition comprising existing and new artworks inspired by the biology, history and mythology of linen.

Linen is the original biotextile and it is produced through the interaction of plants, bacteria and humans. As such, it has been used frequently in Dumitriu's work as a metaphor for the impact of microbiology on our human lives and environment. Works incorporate a range of media including textiles, (sterilised) bacteria and DNA, embroidery, wood, flax, ceramic, resin and human hair, taking the form of sculptural works and installations.



t: 028 9266 3179

 [rspacelisburn](https://twitter.com/rspacelisburn)

 [rspacelisburn](https://www.facebook.com/rspacelisburn)

R **S** **P** **A** **C** **E**



The title references the name of the bacterium responsible for the retting of flax in linen production and the process of 'field work' in science, whilst playing with the notion of a 'field' as a disciplinary boundary which Dumitriu constantly transgresses moving seamlessly between fine art, biology and craft.

Christien Meinderstma

Exhibition | R-Space at the Linen Rooms,
32 Castle Street, Lisburn, BT27 4XE

15 September – 31 October

Tuesday - Saturday 11:00am - 5:00pm



Dutch designer Christien Meinderstma explores the life of products and raw materials Christien's second book, PIG 05049 (2007), is an extensive collection of photographic images that documents

an astounding array of products that different parts of an anonymous pig called 05049 could support. With this book, Christien reveals lines that link raw materials with producers, products and consumers that have become so invisible in an increasingly globalized world.

With her designs Christien Meinderstma aims to regain understanding of processes that have become so distant in industrialization.

t: 028 9266 3179

[w rspacelisburn.com](http://rspacelisburn.com)



Image: Roel van Tour and Mathijs Labadie

R-Space Gallery commissioned Christien to produce a flax chair in Donegal Tweed/Linen Version for this first Linen Biennale. The exhibited work will include flax tea-towels, Linen Pigeons, Pig book, *Bottom Ash Observatory* and video documentation of flax chair and Donegal short.



R

-

**S
P**

**A
C**

E

#LinenAliveNI
#LinenBiennale18

R-Space Gallery, The Linen Rooms,
32 Castle Street, Lisburn, BT27 4XE
t: 028 9266 3179
e: rspace@linenroomslisburn.com
w: www.rspacelisburn.com



Linen
Biennale
N.Ireland

Please visit our website regularly
for updates and new information:
linenbiennalenorthernireland.com



32 Castle Street, Lisburn, BT27 4XE
T: 028 9266 3179
www.linenbiennalenorthernireland.com
linenbiennale@gmail.com

 LinenAliveNI
 LinenAliveNI
 linenaliveni

Charity no. 106350
Company no. 610493



Linen
Biennale
N.Ireland



Programme Design: Christina Herdman